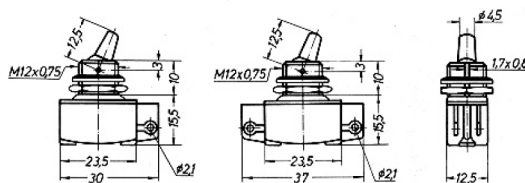
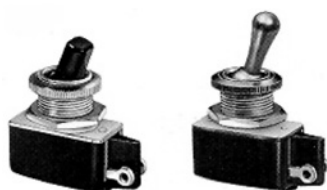


# Interrupteurs

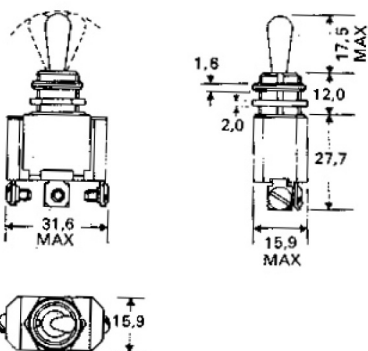
## Interrupteurs unipolaires



G1/0100.1201  
G1/0101.0401

G1/0100.2901  
G1/0101.0601

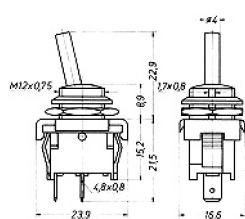
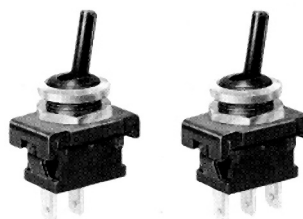
interrupteur avec connexions à souder  
inverseur avec connexions à souder 2A/250V



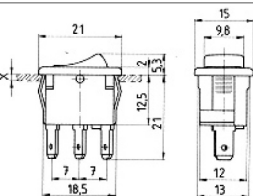
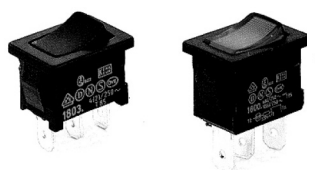
G3/93A401A inverseur  
G3/93A401E inverseur  
G3/93A101A inverseur 1-0-1  
G3/93A101E inverseur 1-0-1  
G3/93A301A inverseur à impulsion 1-0-1  
G3/93A301E inverseur à impulsion 1-0-1

10A/250V

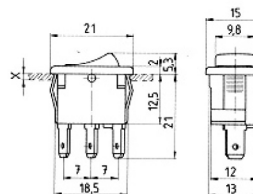
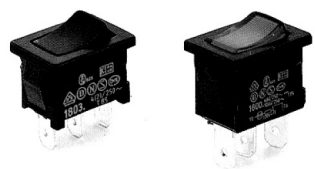
A = connexions à visser  
E = connexions enfichables



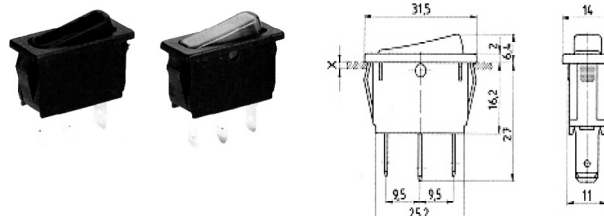
G1/1821.1101 interrupteur  
G1/1823.1101 inverseur  
G1/1828.1101 inverseur 1-0-1  
G1/1828.1301 inverseur à impulsion 1-0-1



G1/1801.1146 interrupteur noir, désignation 0-1 10(4) A/250V



G1/1831.3311  
G1/1831.3312



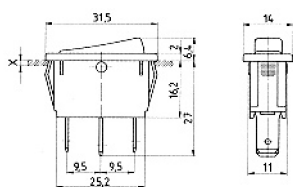
interrupteur blanc, 16 A  
interrupteur noir, 16A

G1/1800.1102 noir, rouge lumineux  
G1/1800.1104 noir, orange lumineux  
G1/1807.1102 lampe témoin rouge  
G1/1807.1108 lampe témoin verte  
10(4)A/250V

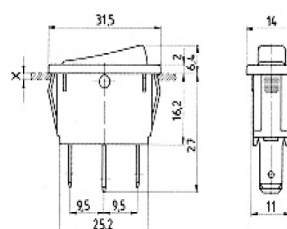
10(4)A/250V resp. 16(4) A/250V



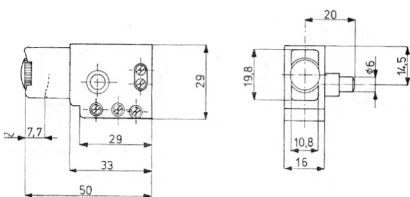
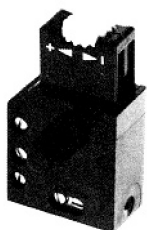
Livable jusqu'à épuisement du stock!



G1/1838.1509 inverseur 1-0-1 10 A  
 G1/1838.1402 inverseur à impulsion 1-0-1  
 6(4)A/250V

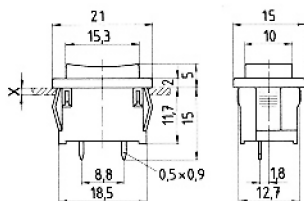


G1/1830.3111 blanc, rouge lumineux  
 G1/1830.3112 noir, rouge lumineux  
 G1/1830.3118 noir, vert lumineux  
 G1/1830.3104 noir orange lumineux  
 10(4)A/250V resp. 16(4)A/250V



G4/35-35 interrupteur électronique  
 pour la variation de la vitesse sans graduation  
 2(3)A/250V

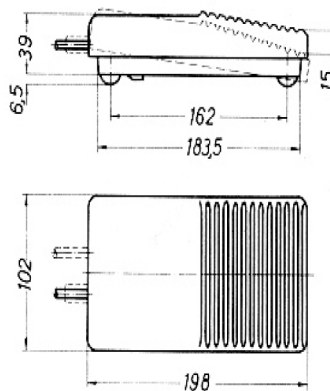
approprié pour FEIN, HITACHI, PERLES, BOSCH



G1/1846.3201 contact de fermeture 2(1)A/250V



1- und 2 polig

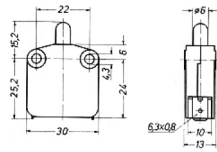


G1/2410.0301 contact de fermeture  
 G1/2410.0401 contact d'inversion  
 G1/2410.0101 1 contact inverseur, 1 contact d'ouverture  
 à action successive  
 6 (2.5) A 250 V AC

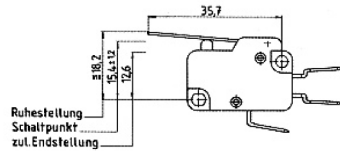
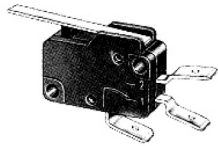
G1/2410.1001 deux contacts de fermeture  
 à action simultanée avec câble  
 6 (2.5) A 250 V AC



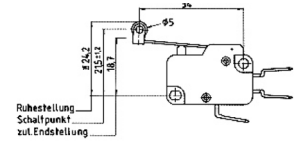
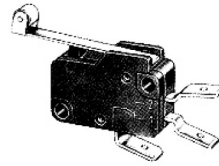
Livrable jusqu'à épuisement du stock!



G1/1117.0101 contact de fermeture  
 G1/1117.0201 contact d'ouverture 16(4)A/250V



G1/1006.1401 contact inverseur avec levier droit court 6(2,5)A/250V



G1/1006.1501 contact inverseur avec levier à galet long 6(2,5)A/250V



**Livable jusqu'à épuisement du stock!**